



THE SOCIETY PAGE

Website: www.20-30-40glassociety.org

Volume 37 Issue 1

January—February, 2016

NEXT MEETING

When:

February 13, 2016

Where:

American Legion Hall
900 S. La Grange Road
La Grange, IL

Agenda:

10:30 a.m. Social Hour

11:00 Business Meeting

11:30 Luncheon

12:30 Program

3:30 Adjournment

Please bring a dish to pass—vegetable, salad or dessert that will serve 8 or more.

Cost: \$8.00 pp

Inside this issue:

PRESIDENT'S COMMENTS	1-2
VICE-PRESIDENTS' CORNER	1-2
December Recap	3-6
Thoughts for Thought	7-8
Moser or Mosser	10-11
Society Calendar	13
Membership Renewal Form	

President's Comments...

H A P P Y N E W YEAR!!!!!!!!!!



Christmas holidays are over and it's time to think about 2016! But before we do that let's think a little more about 2015. I hope all had a marvelous time at the December 5th party, I sure did with Bingo Bob doing the Bingo with his Elf (Taylor) keeping him on track. Jackie and John had a busy schedule with all those prizes (bingo cards) that they gave out to the winners of the *Finds of the Year*. I want to know where all those *Finds* under \$10.00 came from, especially all those under \$1.00. WOW, someone did lots of shopping this year. Our **prize guy** was very busy all year with prizes from February through December. Thanks, Ken, for all you do all year long. Jim and Gail do a great job selling tickets all year. Thanks to all club members for your support in buying Raffle Tickets at all the meetings.

December is a great time to also say thanks to all Committee Chairmen and their committee members for all their time and effort that makes my job so much easier. There isn't room to name all of you so THANKS, THANKS.

To the Board of Directors, many, many THANKS TO YOU for making my job go so smoothly.

We sadly lost Marge Urbonas, our past president, on October 15. She will be missed, She was a knowledgeable long time member that loved sharing information with all. Suzanne Weimer lost

Vice-Presidents' Corner ...

First, **thank you** for electing me your Vice President for this new term. I am now working on future meeting programs and, if you would like to do a presentation of items from your collection, please let me know.



By all indications our Holiday Meeting/Party at Carriage Greens Country Club on December 5th was a great success!! The meals were wonderful and the members of the staff were most helpful in adding some Christmas centerpieces and decorations to the tables to make the settings more festive. I am happy to report that we had 54 reservations – this was a great turnout! I hope everyone had an enjoyable time. I know I did.

We had our usual events – raffles, our *Finds of the Year* competition for the following categories: HAND MADE or ELEGANT, ADAM TO WINDSOR, BEST FIND UNDER \$10.00 (a bargain!) and RARE (Winners in each event are listed elsewhere); and our Dirty Bingo games (always lots of fun!).

Many thanks to Ken Pakula, our "Prize Guy" for finding such beautiful prizes. He always does such a fabulous job!

Our first meeting in 2016 is scheduled for Saturday, February 13. **Jeff Hayden** will present his **H. C. Fry, "A Rainbow of Color,"** and **Mary Kreitling** and **Mary Sue Lyon** will present, "**Plastic Fostoria**" Plastic Plates and Matching Glass Tumblers (4 Colors). These two major

her battle with cancer on April 11th. Suzanne was also a long time member who served as board secretary and work on many show displays. She also shared her knowledge of Imperial Glass with us. We also learned that Betty Senese and Jan Reichling passed away during the year. They were both long time members and served on the board. Jan served as president and Betty served as treasurer.

I am looking forward to 2016. All **BOARD OF DIRECTORS** are in place, see the listing in following pages.

The plans for the 2016 Show and Sale are shaping up nicely. I see that people signed up at the December meeting to help and I'm sure that more people will sign up in February.. Please pass out Show Cards while out shopping. Let's work hard at getting more people through the door. We can only do that if all of you participate. Please encourage your local newspaper to include an article about the Show.

Have Happy New Year!

Rose Roth, President.



programs will be most interesting and informative, so make your plans to attend and enjoy.

As usual, this will be our “eat in style” meeting. Since this meeting is on Valentine’s Day weekend, the theme will be this special day. Bring your favorite red patterns and table decorations to provide your place settings for our luncheon. Please be sure to bring your “dish to pass” of a vegetable, salad, or dessert to feed at least 8 people. We will provide the fried chicken, as usual, for your enjoyment, as well as coffee, iced tea, and lemonade. Remember, there is always an \$8.00 charge per person at the door to help defray the cost of the chicken, the meeting room, coffee, and supplies, etc.

Don’t forget to bring a few extra dollars for the purchase of raffle tickets. Everyone knows that Ken Pakula always does a great job in finding some wonderful glass items for lucky winners to take home. I just know he’ll find something to pique your interest.

Eddie and Neil Unger will help identify your mystery pieces during our “What’s It?” segment of the meeting.

If this isn’t enough to keep us busy, we will again have our “For Sale or Trade” table for your review. You are allowed to bring one item per member for this table. Check out the items that are brought, you never know, you might make great additions to your collections.

See you on February 13, 2016!

Jackie Alton, Vice President

A Message from The Prize Guy

Our first regular meeting of 2016, on Saturday, February 13th will feature a presentation of **H.C. Fry Glass Company** glassware. When I hear the name “Fry” I automatically think of their “Foval” line; you know, that pearly white stuff. I decided to check my “Fry Glassware” reference book and was amazed to see the diversity of their product lines. You’re probably speculating – Ken knows nothing about “Fry”, and you’d be correct.



Fortunately, for *The Prize Guy* and the lucky raffle prize winners, the good news is that the next day is Valentine’s Day. Therefore, the raffle them will be seasonal and include the colors red, white, and pink I hope and with some luck hearts and roses and cupids.



Until next time, happy junkin’.

Ken Pakula



Recap December 5th Meeting

Business Meeting: 20-30-40 Glass Society of Illinois

Rose Roth called the meeting to order at 11:04 a.m.

Karen Smit motioned to accept the minutes from the previous meeting as posted in the newsletter. Jackie Alton provided a second, and the motion was passed.

The following announcements were made . . .

- Rose reported that we, mistakenly, forgot to vote for next year's board of Directors at the October meeting. Bev Kennett asked if anyone would like to add their name to the ballot by volunteering for a position. There were no volunteers, so by unanimous vote the following people were elected to the 2016 Board of Directors . . .
 - o President: Rose Roth
 - o Vice President: Jackie Alton
 - o Treasurer: Bette Bruce
 - o Recording Secretary, general mtgs: Beverly Kennett
 - o Recording Secretary, board mtgs: David Stark
 - o Membership Secretaries: Cindy Stark and Sally Cousineau
- We shared a moment of silence for all the club members who have passed away recently.
- Jackie Alton described the duties of the Food Service position and asked that anyone interested in serving as the coordinator, please contact her or Sally Cousineau for further explanations.
- Rose Roth recognized members, that are leaving the Board, for their hard work and dedication, namely Jay and Karen Smit, John Schleinzer, and Christine Moran. Rose reminded club members that some of these positions are still open, and she asked members to consider volunteering to fill the positions.
- Neil Unger reported that despite previous reports, the bus trip has come out of retirement and Neil has organized a trip for August 2016. He had sign-up forms available.

Committee Reports:

Treasurer's Report: Bette Bruce reported that the Board of Director's passed the budget for the 2016 calendar at their last meeting. She also reported receipts of \$7,119.00 and disbursements of \$7,390.38, leaving our General Fund Checking account with a balance of \$8,421.24.

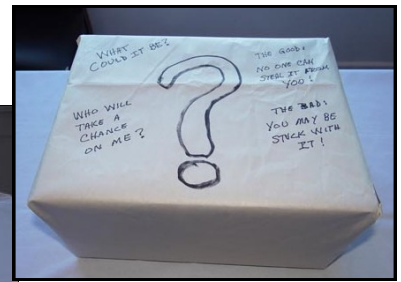
Vice President's Report: Jackie Alton briefly described some of the up-coming programs we will see at our general meetings and, as always, she reminded members to request programs if there is something they would like to see, or to volunteer to share their own collections. She specifically asked for program ideas for the June picnic meeting.

Collector's Market Report: No report was given

Membership Report: Sally Cousineau reminded members to volunteer to help at the March Show and Sale. Help is needed at the hospitality table, raffle, display and the library. Nancy made sign-up forms available, so please sign-up.

(Continued on page 6)

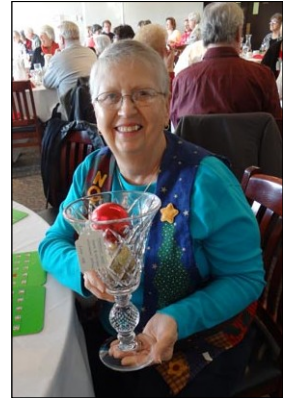
December Meeting Highlights



The mystery BINGO prize



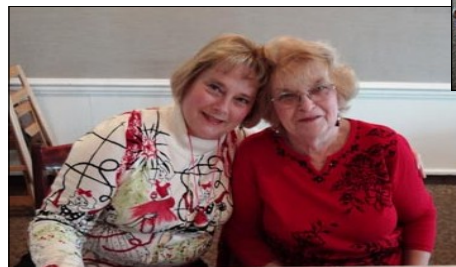
Taylor Blankenship and Bingo Bob Zmich were the callers of the DIRTY BINGO



Mary Feiden, winner of the MYSTERY BOX



Jeanne Lehner won a Vasa Murrah vase raffle prize



Sally Cousineau, Membership, & Bette Bruce, Treasurer, are getting their heads together for 2016 — Happy New Year!



Show Report: Bette Bruce reported that the **club display**, at the **March Show and Sale**, will highlight **Stretch Glass**. Please consider offering to display some of your Stretch glass examples.

Librarian's Report: Nancy Lazaris reminded members that all library books are due by the February meeting so we can display them and use them for identification at the March Show and Sale.

Best Find of the Year Contests:

There were many entries in each of the four categories for the Best Find of the Year Contest. Hand votes were taken and the winners received a free Bingo card. Mary Sue Lyons won the Best Find Under \$10 for her Frye percolator, that she purchased for \$1.00. The Best Find in an "A to Z" pattern was a green Mayfair rolled edge bowl brought in by Lana Larsen. David Taylor won for his entry of a handmade or elegant piece, a Blenko yellow and blue fan vase that he purchased for \$5. In the last category, Rare or Hard to Find, there was a tie. Ken Pakula brought in a green, enameled child's tumble up set, and his daughter, Kris Kammemer found a black pinched decanter and stopper with silver overlay, that may have been produced by McKee. Thank you to all who participated by bringing in their Finds of the Year. It is always nice to see that there are still bargains out there and fun things to find!

Raffle:

The Prize Guy came through again this year with beautiful examples of glass for winners to choose from. The raffle winners were as follows . . . Joyce Rezmer – a **Gothic Garden compote**, Angela McEntee – a **Princess cake plate**, Alice Ewert – an Anchor Hocking **delphite egg plate**, Jeanne Lehner – **Vasa Murrah bowl**, Al Ewert – **L.G.Wright fan vase**, and Jeanne Zmich won the two for one prize of a **Tiffin stretch bowl** and a **non-stretch mayonnaise**. Ken had all the raffle prizes wrapped, so each was a surprise win.

Dirty Bingo:

There were surprisingly few multiple wins at this session of **Dirty Bingo**. There were only two games where we had two winners, so we continued to play until all the prizes had been won. Then we played five games where prizes could be stolen. Kris Kammerer won the first game and chose the **Higgins bowl**. It was stolen from her later in the evening. Mary Feiden was brave and took the prize that was Christmas boxed and wrapped. She won a **Pairpoint #B1083 vase**, which of course, could not be stolen from her. There did not seem to be a favorite prize, as there often is, since three prizes were each stolen once, and the only prize that sat at three different place settings was the **Fostoria Hapsburg chalice**. It finally went home with Bette Wittenberg. The other lucky winners were as follows . . .

Higgins Bowl - Joyce Rezmer

Indiana Glass Carnival compot – Joyce Rezmer

Fire King batter bowl – Karen Trendle

Radiance vase – Cindy Stark

Westmoreland Glass flat top vase – Kris Kammerer

Fostoria smoky vase – Jim Crossen

Covered casserole (Paden City?) – Bette Bruce

Fenton green #857 bowl – Carolyn Koehler

Heisey Waverly compot – Jackie Alton

Duncan Miller pair of candlesticks – Sally Cousineau

Cambridge purple compot – Cindy Stark

And the finale of the afternoon was when Cindy Stark won the last Bingo game. Congratulations to all the lucky winners!

Respectfully Submitted, Bev Kennett

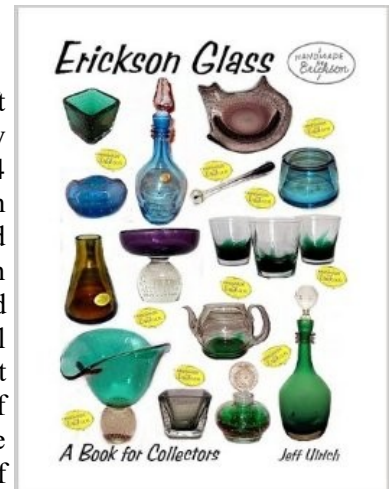


Thoughts for Thought

Believe it or not, my junkin' has been severely limited of late. I've been to a thrift store here and there, bargain hunted at the Roscoe Antique Mall while working my floor time shift and drove unhurriedly along Ogden Avenue until it became Route 34 somewhere near Oswego and ultimately ended in LaMoille about midway between Mendota and Princeton. I did go to Carousel Consignments in Janesville, WI and found an interesting controlled bubble paperweight base vase made by Erickson



Glassworks, circa 1943-1960, a company I'd never heard of before. I bought the vase for resale because it is cool looking, priced right, and I hoped it was made by Pairpoint (blue example to the left & below). Over the years of shopping at Carousel I've learned that U.S. Representative Paul Ryan, recently elected Speaker of the House of Representatives, has been known to shop there with his wife and children. ALAS, MY LATEST CLAIM TO FAME, shopping at the same store as a well known politician.



My Sandwich residing son warned me the Ogden Avenue trip would proceed at about the same pace as a covered wagon may have travelled. He was right, I knew he would be, but now the trip is off my bucket list.

Along the way, I found and visited "Affordable Antiques and More" in Naperville, "Rejoice Antique Mall" in Oswego and "Sandwich Antique Mart" and "Olde Timers Antique Center" both in Sandwich. I didn't NEED anything until I got to "Olde Timers". In one of the back rooms of the mall, I came upon a beautiful Fostoria "American" 12" round tray marked "CUBE" and priced to sell. Pretty nearly across the aisle I also found an 1880's ruby stained "King's Crown" toothpick holder, identified as a small glass, for a mere \$5 investment.

The American tray and the King's Crown toothpick holder were pretty easy to identify. But what about all those other I know-what-the-pattern-is, or this-should-be-easy-to-identify, prizes we find which end up on the "what's it" table. I'm thinking of a couple examples I encountered recently.

Example number one is a topaz stretch glass covered candy container which shouted "Adams Rib" by Diamond Glass. I bought it and hurried home to validate my find. A few references books later I learned that "Adams Rib" is usually colored blue or green, but mine is topaz. What's more, there are several "Adams Rib" candy jars, but none like the one I just bought. So, I continued my search through every appropriate reference book and "Stretch Glass Society Quarterly" news letter in my library. Sure enough, after several hours of research I've proved my point – I found a scarce or maybe rare piece of "Adams Rib".

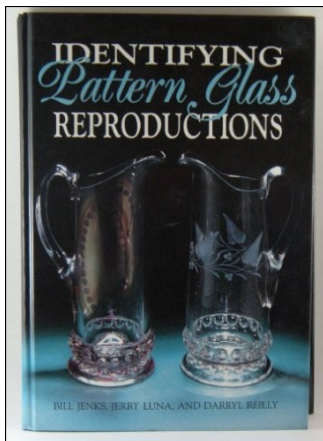
Fast forward a day or two. While looking through my stretch glass book for something else, to my surprise I learned that my rare find is actually a not so rare Fenton Art Glass #1043, one pound, octagon stem bonbon.

Lesson learned – next time instead of trying to prove what the find-of-the-day is - try to prove what-the-find-of-the-day IS NOT.

Item two of *proving that my find of the day isn't what I want it to be* is a goblet. What? Yep, an Early American Pattern Glass (EAPG) water goblet.

The goblet has a very leafy, flowery pattern. Some of the first things you think about when making identification are size, shape, color, weight, mold characteristics, and gut feeling. The starting point for any EAPG search is a book named "Guide to Pattern Glass" by Mollie Helen Mc Cain. This time the search was relatively easy. The illustrations in this guide book are grouped into sections of animals, circles, fruit, stars, etc. So it was a no-brainer to flip to the "Flowers" chapter. About half way through "Flowers" I found my pattern "Morning Glory". Mc Cain also provides a thumbnail list of known facts about each pattern and provides references for





further study. “Researching” this goblet was pretty simple because the notes included the fact that the original goblets were made in the 1860’s at Boston & Sandwich; the water goblet and wine goblet have been reproduced; and an original example has sold at auction for \$1850. So now I’m pretty sure I have a repro. Being a semi-nerd about glass, I took the next step and went to my copy of “Identifying Pattern Glass Reproductions” by Jenks, Luna, and Reilly. This book frequently uses ambiguous terms like taller, shorter, lighter, darker, and heavier than the original. Without an original example, you’re still kinda’ guessing.

This time they nailed it. They described the original with terms like “low grade clear flint-glass” and “dull and crudely fashioned”. They further brought their point home with a hint: “reproduction items are made from a better-quality glass than originals.” They also speculated that my blue colored example was made by L.G. Wright Glass Co, circa 1958-1969, a century after the originals.

I did it, although I wanted my thrift store find-of-the-day to be an original \$1850 goblet, in my heart I was pretty awful sure I bought an interesting looking repro, **and I did.**

Before I go away a short pep talk is in order. When did you attend your last 20-30-40 Society meeting? Was it December? Or October? Last year? Have you ever thought about being a more active club member? We always seem to need kitchen help. We always have room for new members on the board of directors. We always look for more participation in the find-of-the-year segment of the Christmas Party. What about using the new buy/sell section of “The Society Page”? Have you ever thought about presenting your collection? Would you do a presentation if someone “went in” with you? We’d love to see and hear about something near and dear to you. It really isn’t that difficult to do, you know. I’d like to take this opportunity repeat a paragraph from an article I wrote several years ago about making **THE DREADED PRESENTATION:**



Most of us have a collection of something which we thoroughly enjoy and know more about than anyone else. It’s a real HOOT to make a good presentation. Try it – THE DREADED PRESENTATION. You will be amazed at how much knowledge you have acquired and how much fun it is to share your knowledge with others. The first time is always the scariest, for everyone.

Give it some thought, and call Jackie Alton,
you can do it.

Until next time, happy junkin’
Ken Pakula & Kristine Kammerer



Gift Suggestions



Thanks to David Taylor for another magazine ad - silver plate to go with our beautiful glass. Do you recognize the patterns? A nice gift suggestion is an article or presentation on silverplate to match our elegant glassware. Matching Service anyone???



...for the T.C.S. (Tired-Christmas-Shopper)
...Planning-Time = 13 minutes!

Do you want to give consistently charming presents, at a cost not-too-great in time, or energy—or coin of the realm?... You can 'finish-up' the feminine side of your list, in one trip to your jeweler—with gifts of Community Plate...

For instance: The new 'jeweled'-handle knives, so fashionable, ruby-red, emerald-color, or blue (like the sea near Capri)—adding radiance to a table, as jewels do to a gown. 5 patterns. Peerless DeLuxe Stainless blades... \$14.00 for six.

Or: the mayonnaise bowl, in the Early-American PAUL REVERE design—shaped like a water lily—its loveliness derived from simplicity of line (upper right)... \$5.50.

Then, for the Youngest: Generation: children's bowls, cups, porringers—for instance (lower right) a porringer in the delicate GROSVENOR pattern... \$3.75.

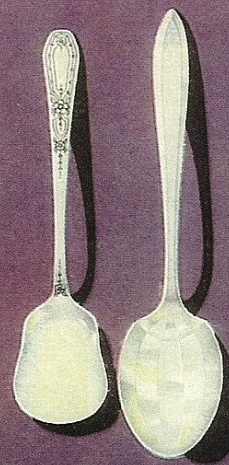
Or, for the woman of great chic: the dessert set (right above), in the PATRICIAN-MODERNE, sugar-bowl

and creamer whose cool, geometric surfaces reflect the new decorative movement. *Very new.* \$10.00 the set.

For a small gift, the sugar spoon (in the same design) is perfect... slim-stemmed and bright-faced as a silver pansy... unmistakably *today.* \$1.25.

For the young hostess who is 'assembling' her silver: a set of ice-cream spoons (next to the sugar spoon) at \$6.00 for six... Shown here in the PAUL REVERE design.

For the bride... or the bachelor girl... or the hostess whose hospitality has out-distanced her silver: the new Modernist Chest—in black, blue and silver, (BIRD OF PARADISE design shown) \$35.25 for a service for 6, \$46.25 for 8. The chest is free.



At Your Jeweler's



ONEIDA COMMUNITY, LTD. ONEIDA · N.Y.

©1951 ONEIDA COMMUNITY, LTD.

NOTE: These 'jeweled'-handle knives cost no more than the regular Community silver-plated handle knives.

COMMUNITY PLATE

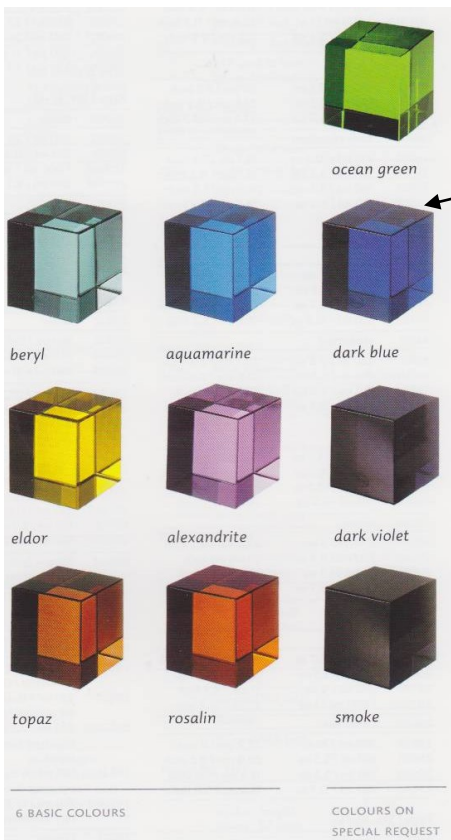
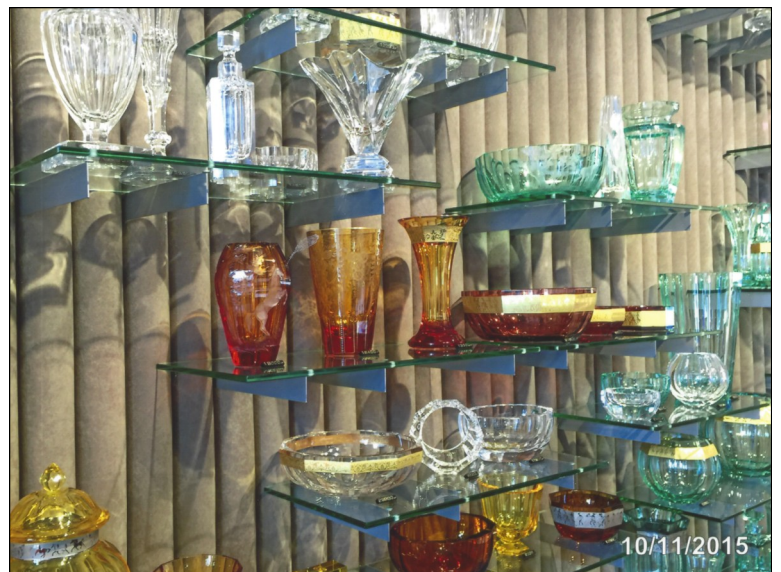
Also makers of TUDOR PLATE

Have You Seen any of this NEW Glass ..

**Moser or Mosser
Czech Republic or USA
With Bette Wittenberg**

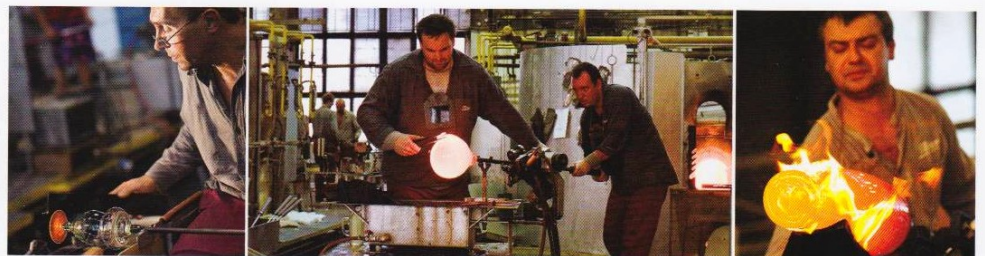


While I was eavesdropping - The clerk informed a client this piece was only \$163,000 Kc (Koruna), \$6384 Euros or \$6,385 USD



Colors and names match many of our elegant glassware

Ruční tvarování křišťálu | Hand shaping of the crystal



Continued on page 11

Suggested by Susan K., Bottineau, ND
The Beauty and Tradition Of USA-Made Mosser Glass



Each piece of Mosser glassware, made in the U.S. using original molds, is thick and durable, and has a classic Georgia "thumbprint" design. Available in cobalt blue, emerald green, and ruby red which contains a rare element, selenium, that creates its rich ruby color and accounts for its slightly higher price. Dishwasher safe. ★USA

No.54221 Mosser Glassware:

BLUE & GREEN	RED
9 oz. Tumbler \$9.95	9 oz. Tumbler \$12.95
12 oz. Tumbler \$12.95	12 oz. Tumbler \$14.95
14 oz. Goblet \$14.95	14 oz. Goblet \$19.95
54 oz. Pitcher \$44.95	54 oz. Pitcher \$59.95

No.53710 Mosser Glass Tree:

GREEN & CLEAR	RED
Small \$14.95	Small \$16.95
Medium \$29.95	Medium \$34.95
Large \$44.95	Large \$49.95

No.53541 Plates:
 6" Ruby Red **\$21.95**
 8" Ruby Red **\$32.95**
 10" Ruby Red **\$36.95**

No.50332 Red Glass Sleigh **\$49.95**
No.64231 Green Glass Sleigh **\$46.95**



en! Shop anytime at www.VermontCountryStore.com

**Mosser Glass being sold by Vermont Country Store
 In their mail Order Catalog**



Mosser Glass
 handmade with heart in Ohio

about us process products tours contact us



Mosser Glass, located in Cambridge, Ohio, has been manufacturing quality hand-pressed glass products for over thirty years. Our handcrafted glassware lines consist of Carnival, Vaseline, and Opalescent, as well as hand-decorated pieces.

Mosser Glass also engages private mold jobs, such as lenses, industrial and pharmaceutical glass. We welcome you to view our manufacturing process, as well as a few of our featured products. If you would like to request a catalog or would like to place an order, please do not hesitate to call or email us.

[Browse our Online Catalog](#)

Another Georgian Pattern.

Doesn't that look like the Fostoria Sleigh?

A Rarity by Neil Unger—seen, owned, read about and now photographed

Here are four items that caught my eye

#1 A wonderful piece of furniture



#2 I don't know what she is selling, But, I suggest you don't buy any....



#3 & 4 Framed War time POSTERS —another collectible!



From Shirley Sumbles.....A sincere and heartfelt thank you to all the club members who called, sent sympathy cards and expressed their condolences on the passing of my sister, Judy Welbourne. At a time like this, it's a wonderful thing to be in the thoughts and prayers of so many caring friends.

Kris and I sincerely appreciate all of the cards, thoughts, prayers and good wishes received from club members upon the passing of uncle and brother David J. Pakula, thank you. **Ken Pakula**

Thank you everyone...for all your notes, cards and phone calls, it really made a difference. You can't imagine how the cards and calls can brighten your day. **Halla Kotlarz**

With sincere Thanks - your thoughtfulness at our time of sorrow meant more than words can express.. The **family of Marge Urbonas**



Get Well wishes are being sent to **Jean Ostendorp**—She is home and doing well. Jean is one of the founding members of our Glass Society and was secretary for many years.

Mary Rose Strezewski's husband had surgery and is not recouping too well, I am sure she could use a cheery note from members.

MEMBERSHIP



The Membership Directories are available — pick up your copy at the next meeting.

If you can't attend the February meeting, you can obtain a copy by mail...the cost of mailing is \$4.00, which doesn't cover the total cost (first class postage and padded envelope). Mail your check and request for a directory to:

The 20-30-40 Glass Society, Attn: Directory, P. O. Box 856, La Grange, IL. 60525

Memberships	2016
Lifetime Members	2
Memberships	102

Welcome New Members:

Rochelle Price - Rockford, Il.

Tony Vimmer—Westchester, Il.

Note: If there is an orange dot on this newsletter's mailing label, we have not received your membership renewal dues and this will be your *last* newsletter. Please mail today.

2016 SOCIETY CALENDAR

- February 13..... American Legion Hall
- March 12 & 13, 2016....Annual Show & Sale,
Concord Plaza, Northlake
- April 3..... Collectors' Market, Legion Hall
- April 9 American Legion Hall
- June TBA.....White Fence Farm
- August 20American Legion Hall
- October 15....American Legion Hall
- November 6 Collectors' Market, Legion Hall
- December TBA..... Restaurant



BOARD MEETINGS

2016 CALENDAR

Location:
Papa Passero's Restaurant
10:00 a.m.

- March 19
- May 14
- September 17



AUDIT REPORT—2014

The Audit Committee comprised of Karen Smit, Larry Dhamers, Linda Dhamers and Jay Smit, Chairperson, performed the Audit of the 2014 Books, Records and Bank Accounts of the 20-30-40 Glass Society of Illinois in April, 2015.

The following report was given to the Society Board Member on November 7 and the General Membership on December 5, 2015.

The Bank Accounts statements, records, checking account register and receipts were in balance and all receipts accounted for. Outstanding checks were recorded and in balance with Check Register. No discrepancies were found.

Respectfully Submitted: Jay Smit, Chairman



WANTED

6 Milk Glass Snack trays
w/cups
Call Rose Roth
(630) 495-1920

For Sale or Trade

Clear Florentine Vase/Parfait,
Blue Fostoria Coin Oil Lamp,
Pink Sharon Butter dish..
Call Bette Wittenberg (708) 354-5966

NEW COLUMNS ** PAID ADVERTISEMENTS

AND FREE ADVERTISEMENTS

PAID ADVERTISEMENTS

Business card size advertisement = only \$25.00 per year (6 issues).

1/4 Page advertisement = \$15 per issue

1/2 Page advertisement = \$30 per issue

Full Page advertisement = \$60 per issue

FREE ADVERTISEMENTS

3 Line Wanted = 1" x 2" printed in one issue

3 Line For Trade = 1" x 2" printed in one issue

Garage Sale = 1" x 2" printed in one issue

MY FIND = 2" X 2" printed in one issue

The Society Page Advertising. Please forward ads by mail to PO Box 856, LaGrange, IL. 60525 or by email to 20-30-40Glassociety@Comcast.net.



The **20-30-40 Glass Society of Illinois** incorporated May 20, 2005 and granted Internal Revenue's 501 (c) 7 "Not for Profit" status. The opinions expressed in articles in the **Society Page** are the authors and not necessarily those of the **Society**. The Editorial Staff reserves the right to edit, with or without the consent of the author or to refuse any material submitted for publication.

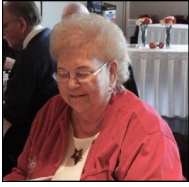
© 2016 20-30-40 Glass Society of Illinois—All rights reserved.

Newsletter deadline for the March—April, 2016 newsletter is February 20th..

LIBRARY NEWS

ALL BOOKS MUST BE RETURNED AT THE FEBRUARY MEETING.

We need them for the Library ID Booth at the Show in March. If you have books and can't attend the meeting, please arrange to give them to somebody who will be attending. I will send an email before the meeting to remind you of the books you have checked out.



Thank you,

Nancy Lazaris and David Taylor Librarians



LOOKING FORWARD TO: *2016 Convention Notes / Dates*

MAY Western Reserve American Glass Club, Cleveland OH

JUNE National Heisey, Tiffin Glass Collectors, National Westmoreland Glass Society, Cambridge Annual Convention

JULY Aladdin Knights—Contact Bill Courter, NAALC, 550 Pioneer Ln., Calvert City, KY 42029

Stretch Glass Society Convention —Stretching over 100 Years: a century of handmade stretch glass In America

National Depression Glass Association

We will publish dates as we receive them... Society members will attend the Shows & Conventions and hopefully send us a report for the Society Page..

2016 "The Oldest Show in the Country" **44th Year**
Glass Sale & Show
Sponsored by The 20-30-40 Glass Society of Illinois
Visit our website at: 20-30-40glassociety.org
Specializing in: *Depression, Elegant, Carnival, Pattern, Quality European, Art & Victorian Glass, & Pottery*
Saturday, March 12th, 2016 -10am to 5pm
Sunday, March 13th, 2016 -11am to 4pm
Door Prizes ♦ Crystal Repair ♦ Glass Identification ♦ Reference Librarian
Admission: \$8.00 per Person / \$7.00 with this card
Location: **THE CONCORD PLAZA MIDWEST CONFERENCE CENTER**
401 West Lake Street, Northlake, IL 60164
Free parking and shuttle bus to front door
For information, call 630-851-4504

The 2016 Annual Show display theme will be:

Stretch Glass -

Stretching over 100 years—A Century of Stretch Glass

Please look over your collections and see what you can add to our display.—contact Bette Bruce, Display Chairperson, for more information

For more information on the Stretch Glass Society check into their website:

<http://>

stretchglassociety.org

**20-30-40 GLASS SOCIETY
2016 BOARD OF DIRECTORS**



TITLE	NAME	PHONE	E-MAIL ADDRESS
President	Rose Roth	630-495-1920	rroth1920@comcast.net
Vice-President	Jackie Alton	773-561-3516	nedlogjsa@att.net
Treasurer	Bette Bruce	630-964-8285	antq3040@aol.com
Secretaries	Beverly Kennett (general meetings)	708-387-9396	Kennettcb@yahoo.com
	David Stark (board meetings)	630-971-0987	certifiedtowinginc@yahool.com
Membership Secretaries	Sally Cousineau (records)	630-719-9225	
	Cindy Stark - (meetings)	630-971-0097	StarkD384@Yahloo.com
	COMMITTEES:		
Acquisition & Preservation	Chairperson: Ken Pakula	815-398-8933	
Annual Glass Show	2016 Chairperson: John Schleinzer	630-851-2576	Jsantiques@aol.com
Audit Committee	Chairperson:		
Bylaws	Chairperson: Alice Ewert	708-352-7436	aewert@sbcglobal.net
Collectors' Market	Chairperson: Alice Ewert		
Financial Committee	Chairperson: Bette Bruce	630-964-8285	antq3040@aol.com
Food Service	Chairperson: Jackie Alton	773-561-3516	nedlogjsa@att.net
Fund Raising	Chairperson: Ken Pakula	815-398-8933	
Historian	Chairperson: Eddie Unger	847-394-2491	ungerjct@aol.com
Hospitality	Co-Chairperson: Gail & Jim Crossen	630-462-0926	gailcrossen@sbcglobal.net
Librarians	Co-Chairperson: Nancy Lazaris	773-267-9612	nanlaz7@yahoo.com
Librarians	Co-Chairperson: David Taylor	773-508-5906	dtay60660@sbcglobal.net
Parliamentarian	Chairperson: Jeanne Lehner	630-654-2845	jeanick5@aol.com
Photography/Video	Chairperson: Neil Unger	847-394-2491	ungerjct@aol.com
Property	Chairperson: Bette Bruce	630-964-8285	antq3040@aol.com
Society Page /Editor	Chairperson: Bette Wittenberg	708-354-5966	bettejw@comcast.net
Web Page	Chairperson: Gail Crossen	630-975-0916	gailcrossen@sbcglobal.net
Member-at-Large	Jeanne Zmich - Sunshine Lady	847-827-4526	
Member-at-Large	Mary Sue Lyon	312-943-2369	mslyon50@gmail.com
Member-at-Large	Gail Crossen	630-462-0926	gailcrossen@sbcglobal.net
Member-at-Large	Angela McEntee	630-846-1981	Angie-mac@live.com



20-30-40 Class Society of Illinois

The Society Page

Bette Wittenberg, Editor

P. O. Box 856

La Grange, IL. 60525

Email: 20-30-40Classsociety@comcast.net

Website: www.20-30-40classsociety.org

Library: www.librarything.com/catalog/20s30s40s

Facebook: www.facebook.com/203040gsofil

FIRST CLASS MAIL

TO -

If there is an orange dot on this mailing label, we have not received your 2016 Membership dues... please mail today, so you don't miss any newsletters...

Happy New Year!

**ADVANCE REGISTRATION FORM
THE 2016 REUNION BUS TRIP**

LEAVING: TUESDAY, AUGUST 23, 2016

RETURNING: SATURDAY, AUGUST 27, 2016

Bus Stopping at: THE BLENKO GLASS CO., HUNTINGTON WV. ANTIQUE SHOPS, CINCINNATI ANTIQUE SHOPS, SPRINGFIELD OHIO ANTIQUE MALLS, Including.. HEART OF OHIO.

Leaving from the BURR RIDGE PACE BUS STOP parking lot (Behind the strip mall)

BE THERE: 7:00 AM

BUS IS LEAVING AT: 7:30 AM

NAME _____

ADDRESS _____

CITY, STATE, ZIP _____

EMERGENCY CONTACT NAME _____

PHONE _____ **CELL PHONE** _____

SPECIAL MEDICAL INFORMATION _____

TYPE OF CREDIT CARD & CREDIT CARD # _____

CREDIT CARD EXPIRATION DATE _____

Your credit card will be used to secure your room reservation each night.

ACCOMMODATIONS: ROOM w/ 2 DOUBLE BEDS _____ or KING SIZE _____

Sharing room with: _____

This form must be filled out and returned by January 31, 2016 or at the latest the February meeting. Bus Fare costs are based on 22 individuals will be \$205.00 per person... More People, Less Fare! Less People higher fare. Once fare is Paid, there will be NO REFUNDS.

Van Driver, Neil & Eddie Unger {TOUR PLANNERS} and the 20-30-40 Glass Society are not liable or responsible for any accidents, illnesses, injuries or deaths that may occur on this tour. All tour members are responsible for their own health care expenses.

Return to: Neil Unger, P. O. Box 125, Arlington Heights, IL 60006

20-30-40 GLASS SOCIETY OF ILLINOIS
2016 MEMBERSHIP FORM



Membership dues are due and payable on December 1 for the following calendar year!

Please fill out the form below. **Remember to Print ALL information clearly so that information in the membership book is accurate.**

Dues are \$30.00 per Single Membership and \$45.00 for Family Memberships. All family members must reside at the same address.

Make Checks Payable to: **The 20-30-40 Glass Society of Illinois**
P.O. Box 856
La Grange, IL 60525

Last Name: _____

Single Membership: \$ 30.00 _____ **First Name:** _____

Family Membership: \$ 45.00 _____ **First Names:** _____

Total Amount Enclosed: _____

Address: _____

City, State, Zip Code: _____

Telephone Number: _____

Email Address: _____

Can we send your newsletter to arrive by e-mail only? *Yes* _____ *No* _____

Please list your glass collections:

Are you interested in working on a Society Committee? _____

If so, which one? _____

The society prints a membership directory so that members may contact each other. We do not give this book to anyone other than Society members. If for any reason you do NOT want to have your name or any other information published in the booklet, please fill in section below:

MEMBERSHIP SECRETARY PLEASE DO NOT PUBLISH : _____

Do you have any program requests? _____

Do you know any speakers that would be of interest to members _____

If Yes, please list their name and phone number _____

Suggestions: _____

**20-30-40 GLASS SOCIETY OF ILLINOIS
2016 COLLECTOR'S MARKET CONTRACT**

The 20-30-40 Glass Society of Illinois' **2015 COLLECTOR'S MARKET** will be held on **Sunday, April 3rd and November 6th**, at the Robert E Coulter Jr American Legion Hall at 900 S La Grange Road, La Grange, Illinois.

If you are interested in selling at the Market, please do not hesitate to fill out the form below and mail *as soon as possible* to: **Alice Ewert, 1026 6th Ave, La Grange, IL 60525**. Tables are assigned on a first come-first serve basis and space is limited.

This Market is a "**perk**" for our Club Members. All sellers *must be current paid-up members in order to set up*. You may have **one** additional person assisting you, due to space considerations.

Let's get the word out about our Market. Please help with the advertising by distributing flyers and/or postcards, which are available from Alice, and will be on hand at the meetings. Please tell your friends, relatives, neighbors, co-workers and contact your local newspapers (a press release is available from Alice), or even perhaps a link from your website. All efforts are **greatly** appreciated! Remember...**the doors open at 9:00 am and close at 3:00 pm. Admission is \$2.50, \$2.00 with a postcard, flyer or mention of a newspaper release.**

IF you have any questions, please contact Alice Ewert at (708)352-7436 or e-mail her at aewert@sbcglobal.net.

Set-up begins at 6:30 am. You provide your own table coverings. Coffee and coffee cakes will be provided for the sellers. (We must be out of the building by 5:00 pm or face additional charges).

APRIL 3, 2016

NOVEMBER 6, 2016

I would like _____ tables @ \$16.00 each, totaling \$ _____ for April ^{3rd}.

I would like _____ tables @ \$16.00 each, totaling \$ _____ for November 6th (*due by October Meeting*).

AGREEMENT: I understand and accept full responsibility for fire damage, theft, breakage or loss of any item(s) in my booth. I will not hold the 20-30-40 Glass Society of Illinois or its Members, or The Robert E Coulter Jr Post of the American Legion or its Members responsible for loss of any kind that may occur during the Collector's Market.

Signed _____ Date _____ Phone _____

Signed _____ Date _____ Phone _____

Signed _____ Date _____ Phone _____

Please sign and return Contract by *March 1st*, along with your check for the tables to Alice Ewert, as listed above. Thank you!