



20-30-40 GLASS SOCIETY OF ILLINOIS

# THE SOCIETY PAGE



Volume 46 Issue 2

March-April 2025

## NEXT MEETING

**When: April 5, 2025**

**Where: Willow Springs  
Community Center**

**8156 Archer Ave.  
Willow Springs, IL**

## AGENDA:

**10:30 - 2:30-ish**

**Bring your  
favorite  
console sets in  
April**



... and her  
mid-century glass

## The Prez and VEEP

Kathy and I enjoyed the Zoom presentation on February 1, 2025, at the General Membership meeting at Willow Springs with our presenter **Anne Madarasz**. Anne is the director of the curatorial division, chief historian, and director of the **Western Pennsylvania Sports Museum**; as well as curator of the spectacular glass display and author of the accompanying book, *Shattering Notions*. Her presentation on how to build a glass collection included the rich history of glass manufacturing in the Pittsburgh (PA) area. Unfortunately, we all had to watch on our phone screens, as my projector toppled from its perch on a table when the lectern decided to move when I leaned on it. The projector is now in several pieces. It could have been worse, it could have been my laptop computer, rather than the projector!!



We have a set of programs planned for this year that should provide everyone with the opportunity to share part of your glass collection with the group, and the chance to learn some new and interesting information about that depression and elegant glassware from the 20s, 30s, 40s, 50s, and even, the 60s!! The program for the April 5, 2025, General Membership meeting at Willow Springs Community Center will be on console bowls and candlesticks/holders, or on the sets. We are asking that everyone bring one of their favorite sets, bowls, and/or candlesticks to show the group the variety of styles, shapes, colors, decorations, and designs that exist among this single category of items. Console sets became popular during the late teens and early 1920s as cut glass and the formality of the Victorian era waned in appeal to "house wives". Console sets remained a feature on sideboards and dining tables until the mid-1950s. Let's see what the variety looks like come April 5, but we ask that you limit your part of the display to one or two sets. **The June 7, 2025, will be at the Sanfilippo Museum in Barrington Hills, IL**, with lunch at a local restaurant in the area. We are working on the details and will be providing a flier with all the necessary information, once we are able to finalize the plans. Please mark the date on your calendar so you won't miss this opportunity to experience some great glass displays.

## Inside this issue:

President's Comments	1-2
Meeting Recap	3
Club Calendar	5
Meeting pictures	6
TV Glass	7
I Love Lucy Glass	10
Book Review	14
ZOOM to ZOOM	15

*continued on page 2 ...*

### ... Prez and VEEP continues

Once you have your console sets and pieces returned to their proper place in your collection, we are going to be asking you to pull out your favorite/prettiest/most spectacular place settings from your collections. Again, if it is simply the plate and cup and saucer or if it is all the sizes of plates, the cup and saucer, stems and tumblers, and all the rest of the pieces in a place setting, bring them out to share and dazzle everyone. We are tentatively planning on another Oktoberfest celebration in October, and are on the lookout for a nice place to have our December Holiday party. If anyone has any suggestions, please let us know your thoughts via email ([wjhayden216@comcast.net](mailto:wjhayden216@comcast.net)), phone call or text to Jeff at 219-730-2635 or to Kathy at 219-781-0891.

The Board of Director's Members-at-Large met in early February 2025 to begin the discussion on changing The Society to a 501c3 non-profit organization, rather than the 501c7 organization that we are currently. This change will allow us to take advantage of several opportunities through the Federal IRS; it will also take about a year to complete the process. We want to thank the Members-at-Large for taking on this task, we are sure they will keep us informed.

The Board of Directors are also helping **Silvano** get things ready for the March 7-9, 2025, Annual Show and Sale at the **Countryside Holiday Inn at 6201 Joliet Road, Countryside, Illinois 60525**. **We hope all of you will be available to volunteer to help make the show a success by giving an hour or two helping where needed.** Because we are at a new venue, and because we are going to be housed in three separate rooms in the facility, we are going to need a good number of helpers who can assist our paying guests find their way to the dealers. We also hope that you will all be able to attend the show and find that item or two for your collection.

Our own **Mary Sue Lyon** has authored a book entitled ***Fostoria Glass Company: Gold, Enamel, and Iridescent Decorations 1906-1942***. To quote Mary Sue, "I'm thrilled to announce that The Glass Flakes Press has just printed my book on Fostoria Factory Decorations. It can be ordered from the Museum of American Glass in West Virginia. Their phone number is 304-269-5006. It may not be listed on their eBay Store yet. **All proceeds from the book go to the Museum of American Glass.** It is 250+ pages full of illustrations, photos and price lists for all known factory decorations from 1906 - 1942. It is selling for \$39.95. I hope you will take advantage of my years of research into this topic." This is a wonderfully written and illustrated guide to Fostoria glass manufactured during the 1906-1942 time period, and you don't have to be a Fostoria glass collector to appreciate the research and effort by Mary Sue!! Congratulations on this publication.

Jeff and Kathy

Prez and VEEP

## GLASS IN USE

The state motto for Michigan is, "If you seek a pleasant peninsula, look about you". It's a true statement, but we do know that the winters on that side of the lake can be tough. Mary Sue Lyon is very well prepared as she gets ready to greet spring and Easter. She shares a beautiful table setting of Fostoria Trojan in the Rose color. (1929-1934) The beautiful console set is Fostoria #2470 with Wisteria bases. Although not seen, the etch is Fuchsia. Thank you Mary Sue!



Across the lake with Mary Sue Lyon





# February 1st MEETING RECAP

Submitted by, Angela McEntee, Secretary

Our meeting was called to order at 11:13 by Jeff Hayden.

26 members were present at the live meeting at the Willow Springs Community Center. Everyone brought their own lunch. There were several joining the meeting by zoom.

Jeff Hayden apologized for breaking the projector. Everyone will have to zoom the program.

Minutes for the December meeting were accepted as written.

There were 2 new members attending: T. Wayne Maples and Mary O'Hara.

Kathy Hayden went over the upcoming meetings:

April will be console sets and the June meeting might be at the Perfume Passage in Barrington, IL. This will be a 2-2 ½ hour tour Kathy is looking for a place to have lunch.

## Treasurer's Report:

December 7, 2024 Meeting Financials:

37 people paid for the meal	\$1295.00
Raffle	\$ 175.00
<u>Bingo Cards</u>	<u>\$ 314.00</u>
Total Income	\$ 1784.00
<b>Total Meeting Profit:</b>	<b>\$ 254.38 (Oct Mtg Profit: \$339.48)</b>

## Income since last general meeting:

December Meeting  
 March Show dealer rents  
 Memberships  
 Storage Facility - \$107.35  
 Money Market interest: 11/30 - \$43.07, 12/30 \$46.97, 1/31 ?

Expenses paid since last general meeting:

Newsletter printing – Nov/Dec \$132.80 Jan/Feb \$157.05  
 Library Storage - \$86.45 (Dec) \$86.45 ( Jan)  
 Miscellaneous Postage Cards, etc. \$57.97  
 Village of Willow Springs 2025 venue rental, 4 dates \$150  
 Holiday party bingo prizes - \$376.07  
 P.O. Box 1 year rental - \$182.00  
 Auction Action News, Show advertising - \$440

## Additional notes:

### General Fund Checking (PNC Bank):

Balance as of 1/30/25 - \$11,703.15

### PNC Bank Money Market account:

Balance as of 1/30/25 - \$17,311.30

**Total** **\$29,011.45**

Submitted by Beverly Kennett 1/30/25

Jeff let us know that Mary Sue Lyon has published ad book. She had it at the meeting for those who wanted to purchase it.

Bette Wittenberg, Lana Larsen, Neil Unger, Rose Roth and Mary Sue Lyon have been appointed to review and possibly change our tax status. They will notify the board when they have completed their project.

He also let us know the board has finalized the Job Descriptions.

Membership: Gail Crossen and Mary Kreitling: we currently have 51 members, more to follow soon after reminders go out.

Society Page – David Taylor – David would like the newsletter articles as soon as possible.

Annual Glass show – Silvano Brugioni – Silvano has been progressing with the show layout. There are 23 booths.

Jeff Hayden let us know that volunteers are needed for the show and he is in the process of obtaining vests for volunteers so they are easily spotted by customers.

Publicity Joanne Donovan: Advertising for the show is going well.

There are advertisements in 3 industry/antique papers. She continues to drop off show cards in appropriate places for people to take. She noted that the electronic advertisements seem to catch the most people.

New Business: Gail Crossen passed cards to be signed for those who are sick.

Neil Unger's 90<sup>th</sup> birthday is in February. He was presented with a cake.

February Raffle the prizes were donated by longtime member Shirley Sumbles.

U. S. Glass Delaware Large and small berry bowl – Green with gold trim – Beverly Kennett was the winner.

New Martinsville Ship Book Ends – 1900-1944. – Winner was Gail Crossen.

Cambridge Glass 1905 – 1954 Epergne – winner Silvano Brugioni

Duncan Miller Heron – Joanne Donovan winner.

Phoenix Consolidated Rose Bowl – winner Aleta Rettker

Viking Bird green small – winner Lana Larsen

Coffee Cups Heisey – winner Angela McEntee

What's it? table:

Neil Unger was the identification person.

Fostoria Vase with Grecian Figure etch – question did anyone know who did the etching?

Dish with bird – Hoffmeir Glass Company

A group of bowls – Old Café, Coronation and Queen Mary patterns.

Presentation: Anne Madaraz from the History Center in Pittsburg.

Anne gave an overview of how they came up with the exhibit a Shattering Notions – A collection of West Pennsylvania Glass. Anne went through how the exhibit was created and how they incorporated as many of the small glass companies throughout Pennsylvania as they could. Lowell Inness had 2 major exhibitions in the 1940's at the Carnegie Exhibition. In 1951, Lowell wanted to preserve hand blown and pressed glassware made in Western Pennsylvania.

Research showed that during the 1800's to 1825 most glassware was functional; Glassware, lamps and window panes to name a few items.

They found that during the 1800's there was some colored glassware.

In 1992, Paul Sailor Vice President of Marketing for McKee Glass identified The Jolly Golfer Set at the exhibition as McKee.

In the 1890's, the major businesses were Steel, coal mining and glass production.

Jeannette Glass factory and McKee were among the larger plants in the area.

It makes sense that there are several collector's clubs in the area: H.G. Fry, Duncan Miller and Phoenix Consolidated. Donations began to come to the museum. They received a rare Radio wave Lamp and some Fry oven ware. The commemorative Rochester High school glasses were made from molds from the Fry Factory.



## SUNSHINE DEPARTMENT

If you know of one of our members who is ill, has had a loved one pass or just needs cheering up, please contact Gail Crossen.

Email: [gailcrossen@sbcglobal.net](mailto:gailcrossen@sbcglobal.net)

Phone/text: (630) 220-6179

## NEWSLETTER CONCERNS?

**Newsletter Distribution, U.S. Mail-Gail Crossen**

**Newsletter Distribution, Email-Bette Wittenberg**

**Address Change?-Gail Crossen**

**To offer content-David Taylor, Editor**

### 2025 SOCIETY CALENDAR

*General meetings at Willow Springs Community Center  
8156 Archer Ave. Willow Springs, IL*

April 5, June 7 (TBA), August 2, October 4, December 6

### BOARD MEETING CALENDAR

**2025**

May 3, June 28, September 6,  
November 1

**2026**

January 3, 2026

We send our best wishes for feeling better and more sunshine days to our friends

Mary Losew

Dick and Bev Popp

Al Ewert

**We've Moved.**



The 20-30-40 Glass Society of Illinois  
**52nd Annual  
Glass Show & Sale**

Saturday, March 8th, 2025 - 10am to 5pm  
Sunday, March 9th, 2025 - 11am to 4pm  
Admission: \$11.00 per Person / \$10.00 with this card  
Special pre-sale Saturday only 9am to 10am \$15.00 per person

Featuring: Depression,  
Elegant, Carnival, Pattern, Art,  
& Mid-Century Modern Glass,  
Pottery & Utensils, &  
Mary Lou's Crystal Repair



**Save the Date.**

New Location:  
Holiday Inn Chicago SW-Countryside Conference Center  
6201 Joliet Rd. Countryside IL 60525  
For information, call 708-655-1702  
or visit us on Facebook at: 20-30-40 Glass Society of Illinois Annual Show and Sale.

### PINK MISS AMERICA FOR SALE

Dinner Service for 6 with 14 Serving Pieces,  
pitcher and more. Email for a complete listing.

All mint condition \$500

Contact: Barbara [Kummerer@gmail.com](mailto:Kummerer@gmail.com)

### EDITOR NEEDS HELP, PLEASE!



This small compote/candy dish is seen in I love Lucy. It has a crystal stem and foot. The inside appears to be white and the outside of the scalloped bowl is a color ... possibly red or blue? I don't know. I would LOVE to identify this piece and potentially have one. Please let me know if you can ID this, or if you think you see it at our show.

Thanks, David

# AS SEEN BY NEIL

## At the February meeting



We celebrated the birthday boy, our good friend Mr. Neil Unger!



The beautiful raffle prizes for this meeting were generously donated by Shirley Sumbles. I'm sure everyone had their eye on their first choice. Maybe second, third, and fourth choice too



Angela was our Queen of Hearts at the February meeting



It isn't crackle or cloisonne, but it is still very pretty and can be admired



A bunch of happy glass campers at the happy glass camp







We're all aware that if there is anything resembling a current surge of interest in vintage American glass, it would be a mini mania for mid-century modern glass. I'm talking about the wonderful items made for a while by companies like Viking, Pilgrim, Blenko, Tiffin Modern, etc. The shape of this glass is usually sleek and smooth, and the colors are bold and sometimes unexpected. The "vibe" of this groovy glass is decidedly futuristic. You could imagine that this glass would look perfectly at home in the far out "Sky Pad Apartments" where *The Jetsons* lived. If you've ever walked into a glass show or antique shop and seen a cluster of this type of glass, you know what I'm talking about. The beautiful shapes and colors will certainly get your attention even if it isn't your usual collecting focus.



When people buy this style of glass, we don't usually ask them what they intend to do with it. Is this their first swung vase? Do they buy every piece of Persimmon colored Viking they find? Do they live in an actual mid-century modern home that they want to decorate to match the period of architecture? Do they live in a Victorian house or Craftsman bungalow but are trying to make it feel like Frank Sinatra's Palm Springs home? It doesn't really matter, does it? It's good to



see new people enter the world of glass appreciation and collecting. While they're shopping for the mod, maybe they'll notice all the beautiful glass from other eras. Fingers crossed!

Blasting off to the 20-30-40 glass show. Jane Jetson thinks a sleek Morgantown console set would be *out of this world* in the dining room. Maybe some Viking too!





Despite the excitement about mid-century decoration for home décor, there is a lot of very nice, but quieter, glass that seems to be ignored despite being prominently used in homes of the period. If you enjoy vintage TV shows, as I do, you will see it flash across the screen if you are looking for it. Many of the popular shows of the time focused on the typical American family ... and maybe the wacky situations they dealt with on a weekly basis. The mother kept the house in immaculate condition with all the necessary and correct appointments. These accessories tended to be rather traditional. You never saw pearl-wearing June Cleaver arranging flowers in a big colorful Blenko vase. Color would have been wasted on those little 20 inch black and white screens anyway.



The perfect American suburban home of the 1950s. Ward & June Cleaver



June Cleaver always looked perfect and so did her kitchen. Wally's friend Eddie (smart aleck and jerk) once gave Mrs. Cleaver a backhanded compliment, "my mother says that your kitchen is always so clean ... it looks like you never do any work in there." June's smile faded.

Here we see that she, like all homemakers of the time, has a *Pyrex mixing bowl*.



Beaver and his friend Gilbert appear to be getting ready for a party. This shows that the Cleavers owned (at least for this episode) a beautiful *Heisey Greek Key* punch bowl. It sits very close to the edge of the counter. Am I the only one that is nervous about this?

We don't know if June also had the matching punch cups, but I'd assume that she did. She seemed perfect in all that she did.



On a hot summer day, June is a cool breeze who keeps her family hydrated with a period pitcher and glasses. The glasses appear to have sailboats and there are fruits or flowers on the pitcher. I'm sure we can identify these folks.

Anchor-Hocking? Federal?



The Cleavers used these glasses on the table at meal time for years. They are simple, traditional, and practical. Very like June. Wally and the Beaver always had milk, as wholesome growing boys in the 50s should.





## Pyrex advertised it as “modern”, so .....

How should we classify Pyrex Flameware? Standing at the stove and boiling veggies seems more traditional than edgy. But cooks must have felt pretty modern, if not worried/experimental when putting clear glass pans on a gas flame. Imagine the glass exploding and sending the contents all over your stove.

This editor does have a few pieces of this cookware because it is just kinda cool to look at. That being said, only one piece has been used here. The double boiler was used to melt chocolate to make a delicious chocolate raspberry cheesecake. It was a nerve-wracking experience for the first few minutes, but worked out quite well.

Is it strange to think a double boiler is beautiful?

## FLAMEWARE can occasionally be seen on vintage TV



The Flameware coffee pot shows up now and then. Sometimes you have to look behind the characters to see what's on the stove. Every good TV mother had fresh coffee ready to serve the husband and to have a good chat with a friend.

Left: Father Knows Best Right: The Donna Reed Show. I wonder if seeing Donna Reed using the Flameware coffee pot caused sales to go up. It couldn't have hurt! Also notice Donna's juice carafe and lid. Libbey, I think.



Lucy has a Flameware saucepan on the stove



Nobody rivals Aunt Bee in the kitchen. (We'll ignore the pickle episode for now) She chose 2 Flameware pans instead of the cast iron that would be more expected in Mayberry.



Aunt Bee had 2 different coffee carafes. I think they're Pyrex, but not Flameware



America certainly does seem to love Lucy. Decades later it is still pretty easy to find a rerun of I Love Lucy when you are in the mood. I would guess that the set and props for I Love Lucy are the most often viewed of any TV show. Fervent fans are familiar with the items in her NYC apartment and can even notice when the furniture or accessories are out of place to accommodate some unusual activity that will be part of the plot. There were actually two different versions of the apartment set. The Ricardos needed more space after Little Ricky's birth. They were able to switch homes with another tenant in the Mertz's building who wanted to downsize. Lucy gained a small additional room for the baby, but otherwise the layout and look of the two units was fairly similar. We know the Ricardo apartment and its furnishings so well that we could walk in and feel at home.

For the final 3 years of the series, Lucy and Ricky left their brownstone at 623 East 68<sup>th</sup> Street in Manhattan and bought a beautiful old colonial house in Westport, Connecticut. The familiar props that had been used in the apartment mostly disappeared as Lucy quickly redecorated in an early American style.

Let's explore some of the Ricardo's possessions that were often used to move the story along.



The elegant Fostoria American comport was frequently featured on Lucy's show. It was often on her coffee table and served nuts and candy to guests. It also appeared in a couple of episodes that took place outside of the Ricardo apartment. It must have been the same piece that they grabbed to use on a different set. The editor has a friend who is a huge fan of the show and he was gifted one of these. It now resides happily on his coffee table.



Left: offering nuts to her "frenemy" Carolyn Appleby. Right: nuts for Fred and Ethel. From the "Supernut" episode.



Interviewed at home on TV. Lucy puts gooey chocolate in mouth as asked a question. Bad idea.



The Ricardos are invited to dinner with the Littlefields (Ricky's new boss). They arrive very late and missed the meal. Lucy is starved and eats ALL the mints in the comport ... then a wax apple from the table.



Ricky is in Hollywood to make a movie. The American comport has made its way out west! Carolyn and Ethel listen to Harpo Marx. This episode has the famous Lucy and Harpo "mirror" image scene.





## PYREX KEEPS LUCY MIXED UP

Lucy was always getting mixed up in crazy situations ... usually of her own making. But being a TV housewife of the 1950s meant that she had need to mix things up in her kitchen as well. For that purpose, she relied on the most popular tools of the day. Like non-TV wives across America, she had a set of colorful glass nesting bowls made by Pyrex.

The bowls can be seen throughout the run of *I Love Lucy*. In the first kitchen they were seen displayed on a shelf on the back wall. In the second kitchen those open shelves were replaced by closed cabinets and the large yellow bowl sat on top of the refrigerator. It is presumed that the other bowls must be stored inside. The bowls were more than just passive set decorations. They were often put into use by Lucy and Ricky.

It seems that this set of bowls was truly a workhorse that met the needs of many families. They were strong, practical, attractive, and useful for a variety of purposes. I find information stating that they came into production in 1945 and originally had a more defined foot. The bottom of the bowls was redesigned in 1950. The end date of manufacture is a bit harder to pin down. I see a mention of 1986, but it isn't clear that it applies specifically to these bowls.

They certainly have proved their strength and usefulness. They are still pretty easy to find in antique malls and they generate interest and a good price.



Left: First kitchen displayed bowls on the shelf

Right: Second kitchen atop the frig. Do you think they rattled?



Ricky and Fred are mesmerized by the fights on TV. Three pyrex bowls of snacks at hand



The boys use a bowl to make waffles for Lucy. It doesn't go well



Making "arroz con pollo", they use 4 lbs of rice ... 1 lb per person. The bowls are used to deal with the explosion of rice, before resorting to a broom and dustpan





## More fun with bowls



Lucy attempts to make her own bread. The recipe calls for 3 cakes of yeast but she reads it as 13. She uses her yellow bowl for the dough, but it quickly outgrows even the biggest pyrex and she needs a huge wooden bowl to contain it as it continues to rise. Lucy and Ethel get quite a surprise when they open the oven door.

Reportedly, the original plan called for a fake loaf, but Lucy wanted the scene to be more realistic. They had a bakery in LA make a real 8 foot long loaf of bread. After the taping it was sliced and shared with the cast, crew, and audience.



Before playing kindly Mrs. Trumbull, Elizabeth Patterson threw rice at Lucy and Ricky from one of the smaller bowls.



Lucy gets a job in a pizza parlor and observes the chef, who keeps flour in the green sized bowl.



Naturally Ethel has the Pyrex bowls in her kitchen too.



After the move to the country the Ricardos and Mertzs go into the egg business. Here Ethel has some of the fresh eggs. Worth about \$500. today.



Poolside in Hollywood with a Paden City center handled server ... and looking for Hedda Hopper.





## More things from the Ricardo apartment?

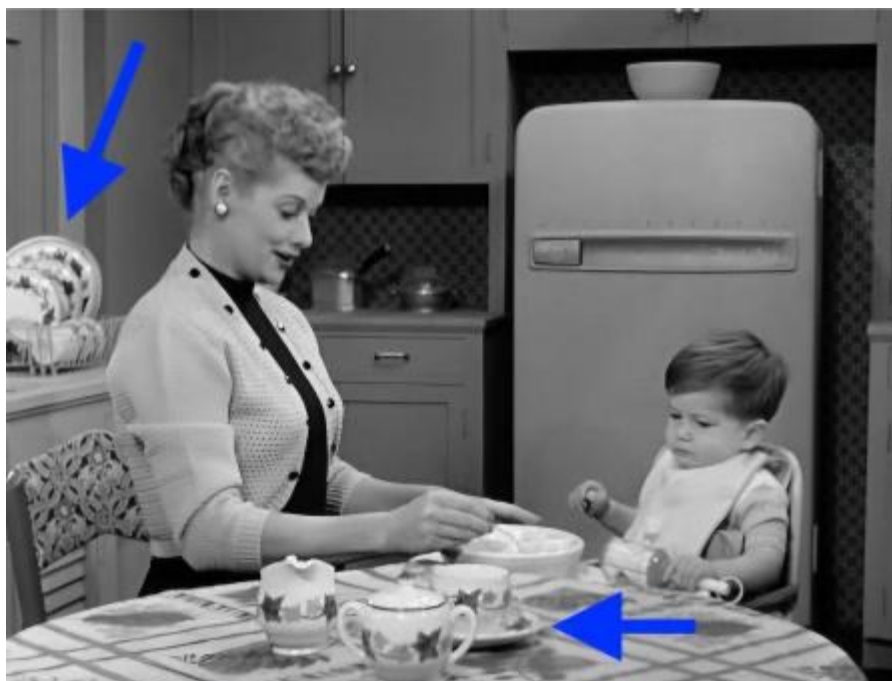
We got some 'splainin to do



## FRANCISCAN

Most viewers will have noticed that Lucy used the beautiful Franciscan Ivy, a hand-painted embossed dinnerware pattern that was introduced in 1948. It's still beautiful today, but we now know that it has a darker side. I wonder if the lead in the glaze could have had anything to do with all the looney ideas that Lucy always came up with. AY YAI YAI indeed!

**IMPORTANT SAFETY NOTICE:** Vintage pottery such as the Franciscan Ivy set seen on I Love Lucy is known to contain lead and is therefore unsafe for food use. Many vintage collectibles do not meet current standards for health and safety and should be considered unsuitable for food use and kept away from children, ideally under glass and separate from your food ware. For more information on levels of lead in pottery and other items refer to this web-site : <https://tamararubin.com/category/franciscan/>



Here we have a beautiful moment of domesticity in the Ricardo kitchen. It's a nice lull between wacky situations. We see the Ivy dishes on the table and in the drainer by the sink. We see the yellow Pyrex bowl on the refrigerator. Lucy is feeding Little Ricky with a children's dish ... hopefully lead-free.

If you look closely, you will see that on the counter in the back there are some pieces of Guardian Service cookware.



Guardian what, now???  
Read on ...



## Guardian Service

This popular aluminum cookware was made by Century Metal Corporation between 1935 and 1955. It was initially made with metal lids that were changed to glass to conserve metal during the war. The lids were domed to allow cooking with

less water. The items were sold through home party demonstrations. A salesperson cooked a meal for the guests and the hostess received gifts. Apparently, there were many male chefs to make it easier to carry the items. The factory burned down in 1956 and manufacture ceased. But ... who made those interesting glass lids?

This cookware can be seen on the shelf of Lucy's second kitchen, but only occasionally in use.



Ricky cooks in Guardian



Color scene at left:

Have you seen the 1953 Lucy & Desi film ... *The Long, Long Trailer*? You should! They are newlyweds setting up home in a trailer. They struggle to fit all their gifts inside. Desi questions why Lucy needs so many different sizes of casserole dish ... couldn't she get by with just one? Well of course not! Don't be silly!

It's new shiny Guardian Service Ware!

## New Book on Fostoria Decorations is now available!

The Glass Flakes Press of Weston, West Virginia has just published a new book; *Fostoria Glass Company Gold, Enamel, and Iridescent Factory Decorations* by FGSA member Mary Sue Lyon. If you collect Fostoria glassware, this is a book you will want to own.

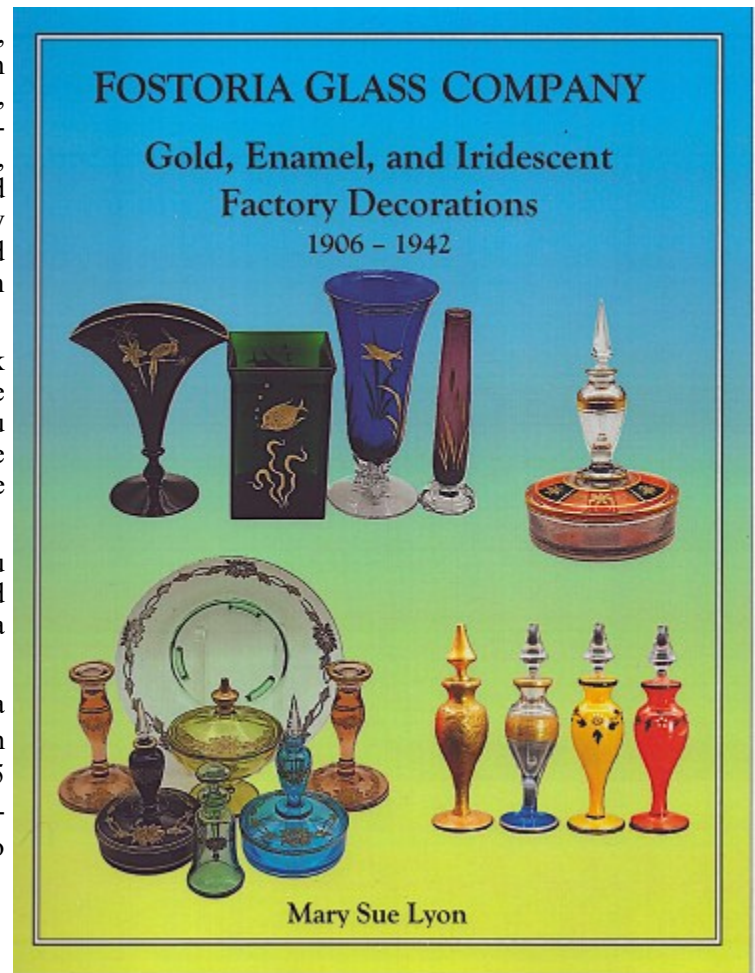
Using original Fostoria Glass Company documentation, the author has compiled information on every known factory decorating process: iridescent, lusters, enameling, gilding and staining for the period 1906-1942. There is an incredible amount of new information, including complete descriptions, 157 illustrated decorations, and the names and/or numbers assigned by the factory to these beautiful decorations. Also included are original factory listings of the pieces decorated with these processes.

You don't have to imagine what these decorations look like – the fabulous photos of actual pieces from the author's collection will help you identify them when you are out trying to add to your Fostoria collection. The book includes over 230 color photos and the colors are true.

The information presented in this volume will help you positively identify pieces already in your collection, and will tempt you with previously unknown Fostoria decorations to look for.

This must have book is available from the West Virginia Museum of American Glass, 230 Main Avenue in Weston, West Virginia 26452. It is spiral bound and 255 pages; \$35.95 for MAGVW members, \$39.95 for non-members. All proceeds from book sales will go to support that museum.

Mary Kreitling





## Encouraging Club Members to Attend Meetings on Zoom

The essence of any club lies in its members and their active participation in events and meetings. In today's digital age, virtual platforms like **Zoom** have become indispensable in connecting people, regardless of geographical barriers or health constraints.

We have explored the importance of club members attending meetings on **Zoom**, the benefits of such participation, and your engagement and attendance.

Club meetings are the cornerstone of building a sense of community and education. They provide a platform for members to share ideas, collaborate on projects, and above all the education and fun of collecting our beloved glass. These gatherings offer an opportunity for members to connect with one another, which is essential for the club's success and growth. **Zoom** meetings allow for real-time communication efficiently conveyed to members who cannot attend the Society meeting in person.

During our **February 1<sup>st</sup> Society meeting** we experienced Anne Madarasz, from the Heinz History Museum, Pittsburgh PA., who gave an interesting and educational presentation on glass makers Fry, L E Smith, Consolidated, MacBeth Evans and others from the area to Society members in Willow Springs along with Zoom members online from the states of Washington and Illinois.

We are seeking feedback from you about our **ZOOM meetings** can you provide insights into what works and what doesn't for you. This feedback will be used for improvements, ensuring that the meetings remain valuable and engaging for all members.

Let me know your thoughts,

Bette Wittenberg

203040GlassSocietyIllinois@gmail.com

The very early days of ZOOM were less than exciting. Glass collectors could hear about a lot of beautiful glass, but it wasn't quite as nice as being able to see it.

The addition of video made the ZOOM experience much better, as seen below with this sample of pictures captured during our February meeting. Check it out!





20-30-40 Glass Society of Illinois  
The Society Page  
David Taylor, Editor  
P. O. Box 856  
LaGrange, IL. 60525  
Email: 203040GlassSocietyIllinois@gmail.com

Website: [WWW.20-30-40glassociety.org](http://WWW.20-30-40glassociety.org)  
Library: [WWW.librarything.com/catalog/20s30s40s](http://WWW.librarything.com/catalog/20s30s40s)  
Facebook: [WWW.facebook.com/groups/893374548783733](http://WWW.facebook.com/groups/893374548783733)

**FIRST CLASS MAIL**

The purpose of the society is to gain more knowledge of the American glassware of the 1920's, 30's, and 40's and to further the preservation and pleasure of collecting glassware

TO -

We're on the web!  
[20-30-40Glassociety.org](http://20-30-40Glassociety.org)

Though we previously said January would be your last issue if you had not renewed ...this is your Second Chance. You are receiving this Society Page even if you have not renewed! Please save us extra work and money - always renew in December. Come join us!



**Fenton's Melon Rib Shapes & Colors**  
is the topic of our *stretch out* discussion on  
**Thursday, March 13, 2025**

at 8 pm Eastern, 7 Central, 6 Mountain & 5 Pacific Time.

Come share your melon rib pieces of stretch glass.  
You're also welcome to share new finds or pieces  
you'd like help identifying.

Information is available on our website, [stretchglassociety.org](http://stretchglassociety.org)  
And also available by email: [info@stretchglassociety.org](mailto:info@stretchglassociety.org)

